

AT&T Cybersecurity

# 2023 The Edge Ecosystem

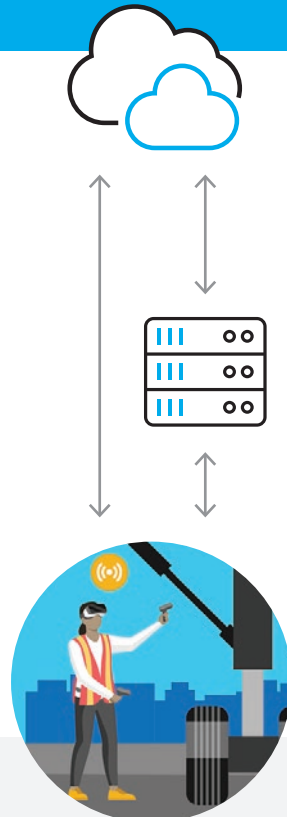
The edge ecosystem is rapidly developing. While in the early stages, our research uncovers the trends to help you start strategically planning and investing for securing this dynamic shift in computing.

Based on survey results from the 2023 AT&T Cybersecurity Insights Report: Edge Ecosystem.

## What are the common characteristics of edge computing?

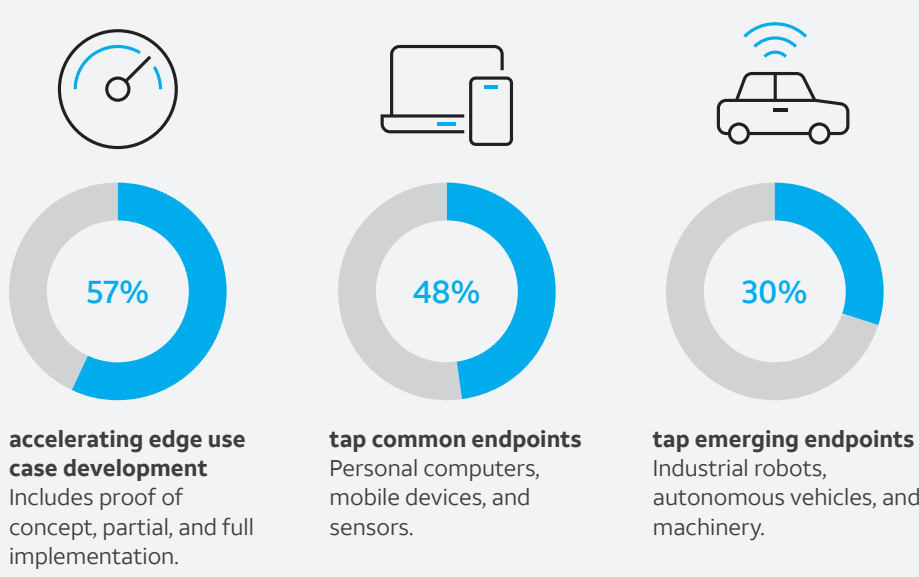
- Software defined**  
Private, public, on-premise, or cloud
- Data driven**  
Closer to user creation and consumption

**Distributed configuration**  
Intelligence, networks, and management

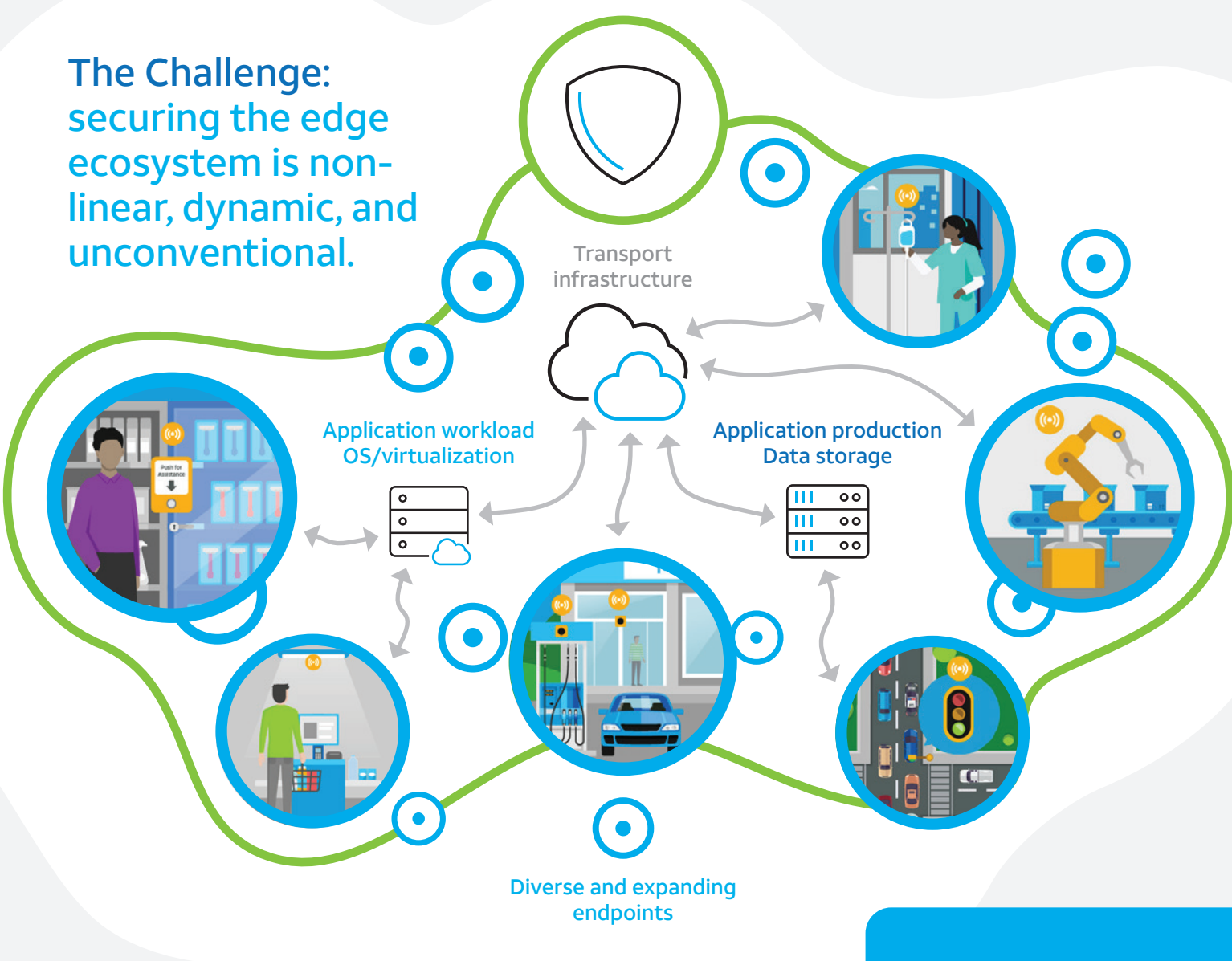


Think of the edge ecosystem as a new opportunity for competitive differentiation and business outcomes.

## Edge computing use cases are increasing.



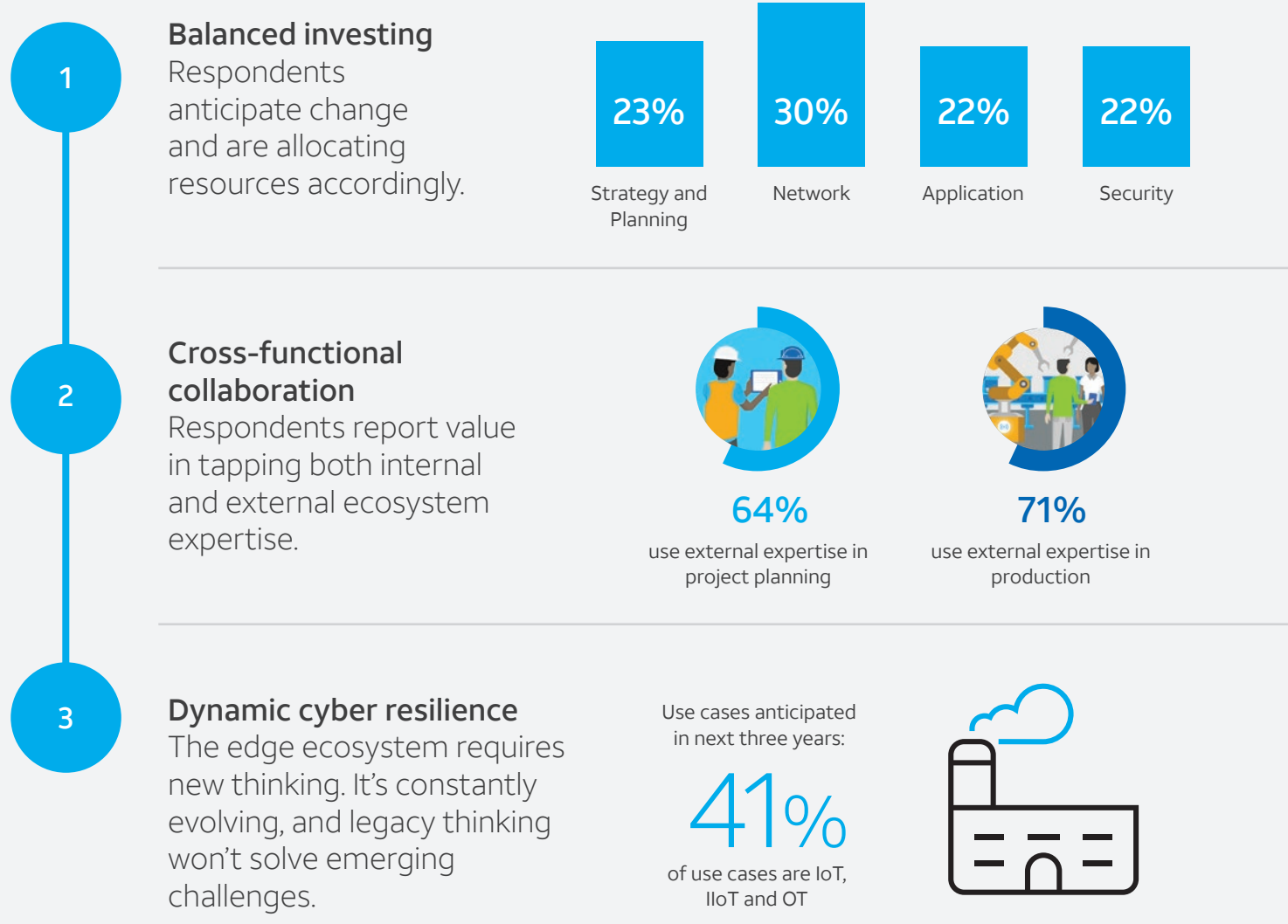
## The Challenge: securing the edge ecosystem is non-linear, dynamic, and unconventional.



Change is inevitable. Plan to pivot.

## The Opportunity: creating a secure edge computing ecosystem

Three key initiatives emerged as respondents reported the changes they are making.



## Prepare to secure your edge ecosystem



Get the 2023 AT&T Cybersecurity Insights Report: Edge Ecosystem

Download



**About the research**  
Research conducted during July and August 2022. We surveyed 1,418 security practitioners from the United States, Canada, the United Kingdom, France, Germany, Ireland, Mexico, Brazil, Argentina, Australia, India, Singapore, and South Korea. Respondents come from organizations with 1,000+ employees, except for US SLED and energy and utilities verticals. Respondents were limited to those whose organizations have implemented edge use cases that use newer technologies such as 5G, robotics, virtual reality, and/or IoT devices. Respondents are involved in decision-making for edge use cases, including cybersecurity, that involves new technologies such as 5G and IoT devices. For certain questions, participants could choose more than one response. In these cases, the responses do not round to exactly 100%. More information is available in the report.