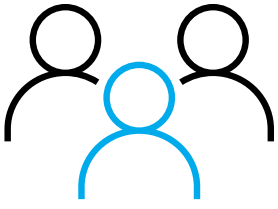


# FOCUS ON SLED

The world is moving to “things enabled” computing - networks are always available and users and data are everywhere. The stakes for SLED organizations are too high for reactionary security decisions.

(Based on survey results from the 2022 AT&T Cybersecurity Insights™ Report: Securing the Edge)

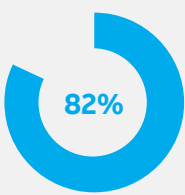


## SECURING THE EDGE IS A SHARED RESPONSIBILITY

While 5G network providers can deliver inherent security, lower latency, and higher bandwidth, SLED organizations are responsible for securing and safeguarding their digital assets such as data, applications, and endpoints.

### WHO IS MOVING TO THE EDGE?

The majority of SLED organizations are moving to the edge.

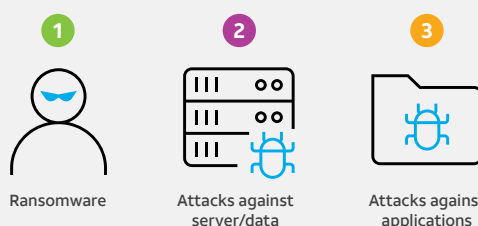


82% of survey participants are either planning, have partially implemented, or have fully implemented an edge deployment.

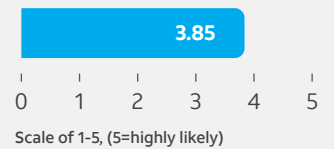
### MOMENTUM IS HIGH AND SO IS PERCEIVED RISK

Globally, the perceived risk of a cyberattack on an edge deployment is “highly likely.” Perceived impact to the business is “very impactful.”

#### TOP THREE EDGE ATTACK CONCERNS



#### RISK OF COMPROMISE

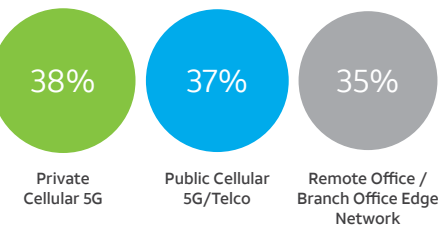


Perceived risk of a compromising attack is “highly likely” across all vectors.

### A TIME OF TRANSITION

Architectures for edge networks and security controls continue to exist in a hybrid world (on-premises and multi-cloud).

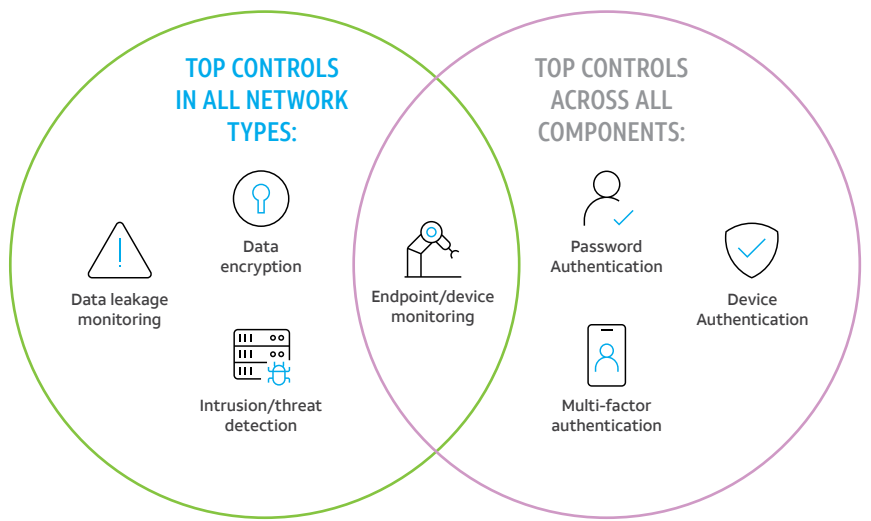
#### PREFERRED NETWORK TYPES FOR EDGE USE CASES



Organizations will use a combination of edge network types in the foreseeable future.

### AND A NEED FOR CONTROL

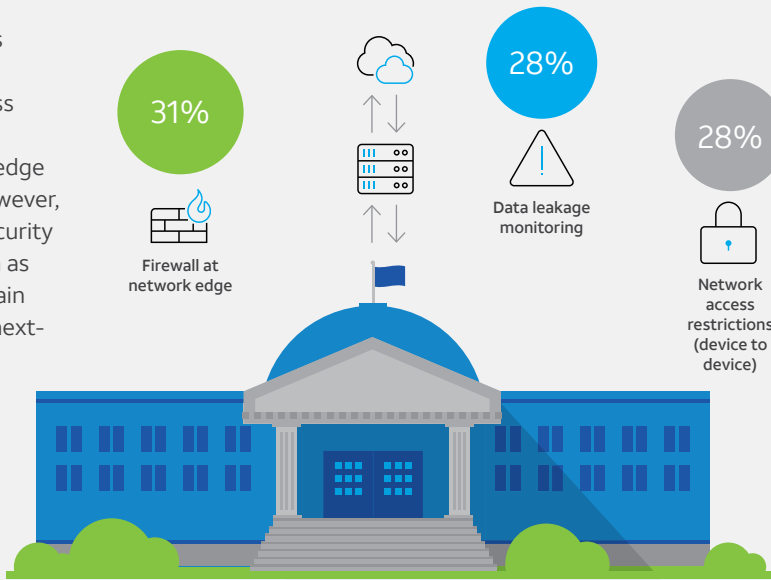
Preferred cybersecurity controls vary, depending on the component and network type.



### SASE IS IN THE SPOTLIGHT

Organizations believe SASE (Secure Access Service Edge) helps secure edge networks. However, traditional security controls, such as firewalls, remain relevant in a next-gen form.

#### SECURITY CONTROLS WITH MOST SIGNIFICANT PERCEIVED COST-BENEFIT



### BUDGETING FOR EDGE SECURITY IS TOP-OF-MIND

Globally, SLED organizations anticipate investing broadly, holistically, and early in cybersecurity controls to secure the network and its systems.



### NAVIGATE YOUR JOURNEY TO THE EDGE WITH YOUR STAKEHOLDERS

1. Use legacy cybersecurity controls where appropriate
2. Keep up with next-generation approaches such as Zero Trust, SASE, and extended detection and response (XDR)
3. Work with a trusted advisor who can help you navigate the complexities of moving to the edge — with experience and practical advice on how to proceed.

Reactionary security decisions can result in business disruption that stunts that growth, or in extreme cases may shutter your business entirely.

DOWNLOAD THE AT&T CYBERSECURITY INSIGHTS REPORT: SECURING THE EDGE – A FOCUS ON SLED TO LEARN MORE.



Data in this infographic was sourced from the September 2021 survey results for AT&T Cybersecurity Insights™ Report: Securing the Edge and contains data beyond that detailed in the report.

© 2022 AT&T Intellectual Property. All rights reserved. AT&T, Globe logo and Mobilizing Your World are registered trademarks and service marks of AT&T Intellectual Property and/or AT&T affiliated companies. All other marks are the property of their respective owners. The information contained herein is not an offer, commitment, representation, or warranty by AT&T and is subject to change.